



Main features:

- Amplifies the strain between the 2 mounting areas mechanically
- Integrated analog amplifier (active) with AC-coupling
- Ideal for tension mode
- For Dynamic applications (even fast)
- Ideal on fast running Presses
- Solid steel housing (IP54)

The strain link sensor SL76-AC picks up surface-strain between the 2 mounting locations. The strain occurring between the mounting areas is mechanically amplified inside of the sensor. The integrated AC amplifier supplies a signal that needs no reset -> the signal drops even if the load remains present. Ideal for very fast cycles where a reset between the cycles is not possible. The controller only needs to measure the output signal periodically. Thanks to the rugged design, this sensors are used in heavy industrial environment.

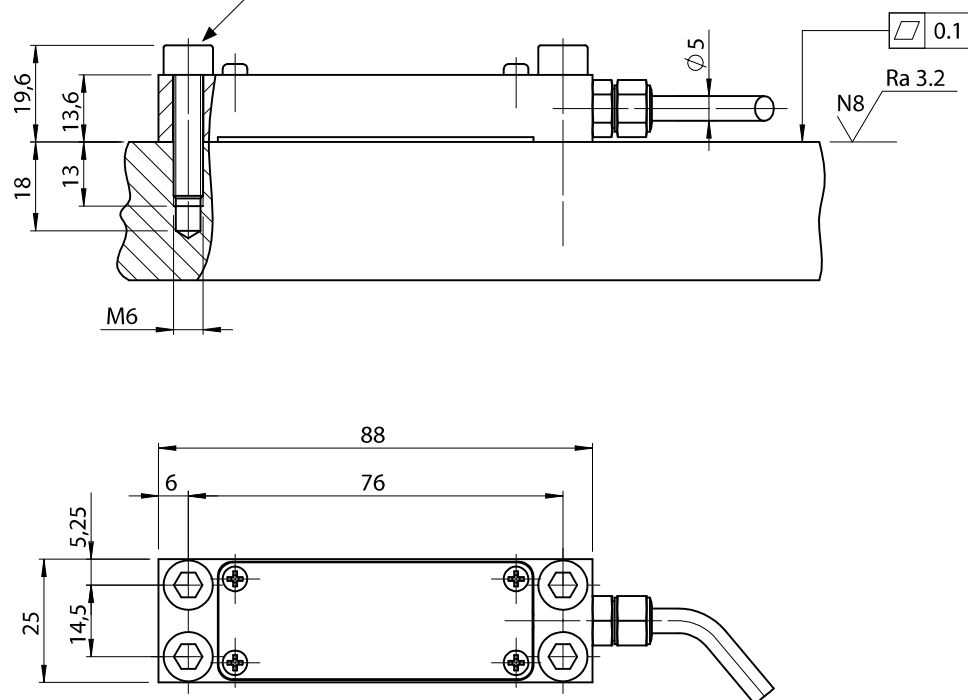
TECHNICAL DATA

Strain gauge type	Foil (GF = 2.0)
Bridge resistance	1000Ω
Measuring range	100...800µε, -100...-250µε
Low-pass filter	150Hz
Output signal	0...±10VDC
Noise	< 10mV
Sensitivity tolerance	± 1%
Accuracy	<± 1% FS
Linearity	<± 0,5% FS
Hysteresis	<± 0,3% FS
Repeatability	<± 1% (max. 2%)
Output resistance	10Ω
Time constant AC-coupling (97%)	68 s
Supply voltage	20...28VDC
Supply current	< 20mA
Inverse polarity protection	Yes
Accidental short-circuit protection	Yes
Operating temperatur range	-10...65°C
Storage temperatur range	-10...65°C
Temperature coefficient at 10°C	< 0,2 (0,1 typical)
Overload capability	max. 1200µε (offset occurs)
Protection class	IP54
EMC	2014/30/EU
Case material	Stainless steel
Cover material	Aluminum
Weight, incl cable	110g

DIMENSION

SL76-AC

4 pcs M6x25; class 12.9;
recommended torque min 14 Nm



Accessories include:

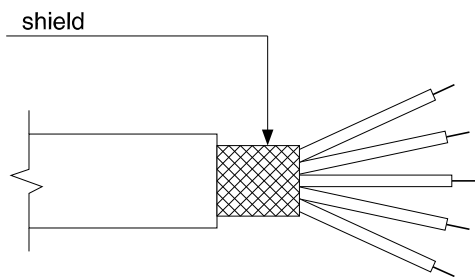
4 mounting screw M6x25; class12.9

Dimension in mm

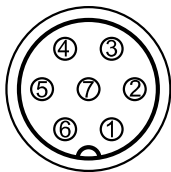
ELECTRICAL CONNECTIONS

PUR screened cable (standard); 5 x 0.14mm²; Ø 5mm; bending = 10 x Ø

Option O



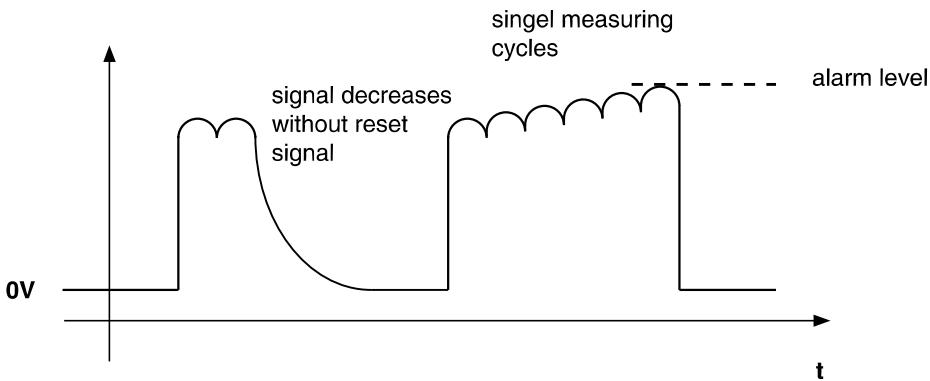
Option C



Option O Open leads	Option C Connector output	Function
white	1	Power 24VDC
brown	2	Test Out
yellow	3-7-6	GND (0V
green	4	-
grey	5	Signal +

Stretching (positive strain) gives positive signal.
Commprression (negative strain) gives negative signal.

AC-COUPLING



ORDER CODE

Strain link sensor with amplifier
and AC-coupling

SL76-AC - - - - -

Measuring range	
100 $\mu\epsilon$	0100
250 $\mu\epsilon$	0250
500 $\mu\epsilon$	0500
800 $\mu\epsilon$	0800

Bridge configuration	
2/4 bridge	2

Cable lenght	
0.5 m	005
3 m	030
5 m	050
10 m	100

Connection	
Open leads	O
Cable with connector	C

Example: SL76-AC - 4 - 0250 - 2 - 030 - C

Strain link SL76-AC, Measuring range = 250 $\mu\epsilon$, cable lenght = 3m, cable with connector

GEFRAN spa reserves the right to make any kind of design or functional modification at any moment without prior notice.



GEFRAN

Sensormate AG

Steigweg 8, - CH-8355 Aadorf, Switzerland
ph: +41(0)52-2421818 - fax: +41(0)52-3661884
Internet: <http://www.sensormate.ch>

GEFRAN spa

via Sebina, 74 - 25050 PROVAGLIO D'ISEO (BS) - ITALY
ph. +39 030 9888.1 - fax. +39 030 9839063
Internet: <http://www.gefran.com>

DTS_SL76-AC_11-2020_ENG